



**Spotting, Tight Spaces, Baseboards, Stairs**



The HAWK Talon Edger Floor Machine is designed to scrub built-up dirt in corners and on baseboards without bending and back-breaking effort. Scrub with pads or with optional bonnets or brushes. Includes the pad driver and an assorted pad startup kit.

**Power**

- 1/8 HP, DC motor
- 115V, 50/60 Hz power
- 35 ft., (16-3) 2-piece commercial with cord lock

**Drive System**

- Enclosed durable gear belt drives brushes and pads at 500 RPM

**Engineered Design**

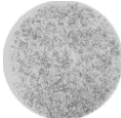
- 2 sizes - 6" and 8"
- Handle adjusts from 47" to 52" with height control knob
- Rotational molded polyethylene housing
- The brush drive is injection molded. Drive is reinforced resin with the unique Mag-Lok™ magnetic system to securely mount brushes and pad drivers without tools
- Optional bristle brushes, pad fiber pads and bonnets

**Safety Features**

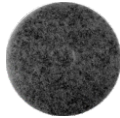
- Quiet operation
- Built with UL approved components



Red Scrub  
6" AS009-CS  
8" AS009-8CS



White Polish  
6" AS011-CS  
8" AS011-8CS



Black Strip  
6" AS010-CS  
8" AS010-8CS



Pad Driver (1)  
6" AS003  
8" AS003-8



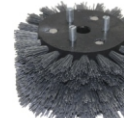
Nylon (1)  
6" AS002  
8" AS002-8



Grit (1)  
6" AS005  
8" AS005-8



Nylon Edger (1)  
6" AS006  
8" AS006-8



Grit Edger(1)  
6" AS001  
8" AS001-8



Bonnet (6)  
6" AS008-6  
8" AS008-8

**Specifications**

Model	Talon-6	Talon-8
Item #	F06-06-02	F06-08-02
Brush Size	6"	8"
Dimensions L x W x H	11" x 6" x 47" Adjusts to 52"	11" x 8" x 47" Adjusts to 52"

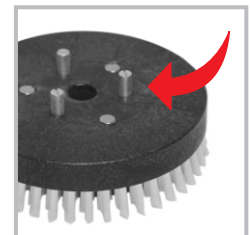
**Both Machines**

Motor	1/8 HP, 115V DC
Power	115V, 50/60 Hz 1.1 Amp draw.
Power Cord	35 ft., (16-3) 2-piece commercial w/ cord lock
Brush Speed	500 RPM
Brush Mount	Mag-Lok™
Housing	Molded high density plastic
Weight	10.5 lbs.

Subject to Change Without Notice



Talon Scrubs in  
Tight Spaces



Mag-Lok™ 3 Steel  
Drive Pins Mount  
Brushes



Adjustable Handle  
Height Locks to  
Position



Talon Tools  
Strip, Scrub & Polish