



Spotting, Tight Spaces, Baseboards, Stairs



The HAWK Talon Edger Floor Machine is designed to scrub built-up dirt in corners and on baseboards without bending and back-breaking effort. Scrub with pads or with optional bonnets or brushes. Includes the pad driver and an assorted pad startup kit.

Power

- 1/8 HP, DC motor
- 115V, 50/60 Hz power
- 35 ft., (16-3) 2-piece commercial with cord lock

Drive System

- Enclosed durable gear belt drives brushes and pads at 500 RPM

Engineered Design

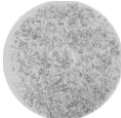
- 2 sizes - 6" and 8"
- Handle adjusts from 47" to 52" with height control knob
- Rotational molded polyethylene housing
- The brush drive is injection molded. Drive is reinforced resin with the unique Mag-Lok™ magnetic system to securely mount brushes and pad drivers without tools
- Optional bristle brushes, pad fiber pads and bonnets

Safety Features

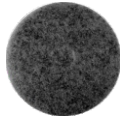
- Quiet operation
- Built with UL approved components



Red Scrub
6" AS009-CS
8" AS009-8CS



White Polish
6" AS011-CS
8" AS011-8CS



Black Strip
6" AS010-CS
8" AS010-8CS



Pad Driver (1)
6" AS003
8" AS003-8



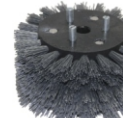
Nylon (1)
6" AS002
8" AS002-8



Grit (1)
6" AS005
8" AS005-8



Nylon Edger (1)
6" AS006
8" AS006-8



Grit Edger(1)
6" AS001
8" AS001-8



Bonnet (6)
6" AS008-6
8" AS008-8

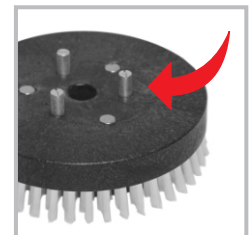
Specifications

	Talon-6	Talon-8
Model	Talon-6	Talon-8
Item #	F06-06-02	F06-08-02
Brush Size	6"	8"
Dimensions	11" x 6" x 47"	11" x 8" x 47"
L x W x H	Adjusts to 52"	Adjusts to 52"
Both Machines		
Motor	1/8 HP, 115V DC	
Power	115V, 50/60 Hz 1.1 Amp draw.	
Power Cord	35 ft., (16-3) 2-piece commercial w/ cord lock	
Brush Speed	500 RPM	
Brush Mount	Mag-Lok™	
Housing	Molded high density plastic	
Weight	10.5 lbs.	

Subject to Change Without Notice



Talon Scrubs in Tight Spaces



Mag-Lok™ 3 Steel Drive Pins Mount Brushes



Adjustable Handle Height Locks to Position



Talon Tools Strip, Scrub & Polish