



Large Area Floor Finish Applicator

The HAWK Flight Applicator glides across the floor as it applies water-based and solvent-based finishes, restorers and disinfectants in a smooth, even, crystal-clear coat.

Available with 3 aluminum applicator head sizes - 28", 36" and 48" wide - delivering solutions to the floor at up to 27,500 square feet per hour. The patented, variable-flow control pump can reduce finish usage by up to 20%.

No spills, no drips, no baseboard splashes. Even novice users can perform like a pro.

Engineering Design

- 12 V battery-powered 70 psi solution pump delivers finishes to the floor through the aluminum applicator bar
- Patented variable flow control switch and a master on/off switch is at your finger tips
- 8" wheels with a magnetic sensor activates the pump as you pull the Flight Applicator across the floor
- Use a lambs wool applicator with added 3" synthetic yarn pad to spread solvent-based finishes
- Use a microfiber applicator pad to apply water-based finishes. (Always check the finish product label for the recommended pad type.)
- Hook and loop design easily mounts pads to the applicator bar
- The corrosion-resistant, powder-coated frame is 21" wide x 33.5" deep and holds up to (2) 2.5 gallon bottles or (1) 5 gallon pail
- A pin-locked handle height adjusts from 32" to 40" high, fitting the user's height
- Easy to rinse and clean. Applicator bar and pad disconnects for convenient storage.



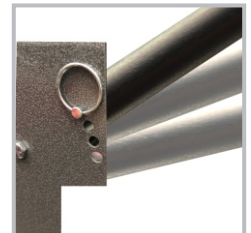
Specifications

Model	Flight 28	Flight 36	Flight 48
Item #	F-HF-28	F-HF36	F-HF-48
Aluminum Head Size	28"	36"	48"
Application per Hour	15,000 sq.ft.	20,000 sq.ft.	27,500 sq.ft.
Pump / Motor	70 PSI	70 PSI	70 PSI
Frame Construction	Corrosion-resistant, Powder Coated Steel Frame		
Frame Dimension	21.2" x 21" x 33.5"		
Adjustable Handle	32" to 40" High		
Pad with Twisted Synthetic Yarns			
(1) Microfiber Pad	#HVMFP28	#HVMFP36	#HVMFP48
(1) Lambs Wool	#HVLWP28	#HVLWP36	#HVLWP48
Warranty	1 Year Pump and Motor - 3 Years Steel Frame		

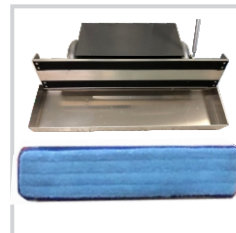
Subject to Change Without Notice



Battery Powered Pump Moves Finishes from Pail to Floor



Pin-Lock Handle Adjusts from 33" to 40" High



28", 36" & 48" Microfiber Pads with Hook & Loop Mounting



28", 36" & 48" Lambs Wool / Yarn Pads Fit on Applicator Bar