



## Stripping, Scrubbing & Resurfacing

Big jobs are no problem with the Wingspan 29" wide-area floor machine. Two 15" counter-rotating heads work in harmony to scrub, strip or polish a 29" path quickly and effortlessly. Cut labor in half and still not break the budget compared to higher cost automatic floor machines.

The Wingspan's unique design provides Forward Assist. A first of its kind in hand-held scrubbers.

### Power

- Dual 56 frame, 1 HP dual-capacitor TEFC AC motors
- 115-230V, 50/60 Hz motor
- 50 ft., (12-3) industrial power cord with twist lock
- Low amp draw

### Drive System

- Triple-planetary XHD 11:1 helical cut industrial gears (case-hardened with steel coupler)

### Engineered Design

- Cleans a 29" path with two 15" pad drivers (included)
- Welded, powder-coated steel frame
- Optional, frame-mounted removable weight (PN#xxxx)
- One piece powder-coated, heavy duty steel handle with 4-position pin lock and vinyl grips
- High density plastic molded brush shroud and splash guard
- Thumb-operated safety switch. Negative pressure on/off switch. Dual steel operating triggers.
- 2" x 8" non-marking ball bearing wheels
- Includes EZ Glide Transport Cart
- Optional 4 gallon solution tank (#A0001-Color4) 7 colors
- Optional 6 gallon solution tank (#SME-2QRBLK) Black
- Optional handle mounted cord wrap (#KIT3009-1BLK)

### Safety Features

- Quiet 66 dB operation. Meets GS42 requirements. Manufactured with UL listed components

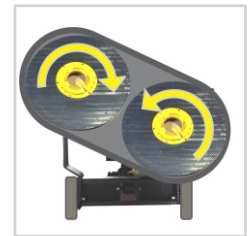


## Specifications

<b>Model</b>	<b>Wingspan II</b>
<b>Item #</b>	<b>F0061-29</b>
<b>Motor</b>	Two 1 HP, TEFC AC Motors
<b>Drive System</b>	Triple-Planetary XHD 11:1 Helical-Cut Industrial Gears
<b>Power</b>	115-230V, 60 Hz power (50 Hz optional)
<b>Power Cord</b>	50 ft., (12-3) 2-piece industrial with twist lock
<b>Machine Size</b>	29 inch
<b>Pad Size</b>	15 inch
<b>Pad Speed</b>	165 RPM
<b>Amp Draw</b>	7.2 Amp
<b>dB Rating</b>	66 dB - Meets GS42 specs
<b>Head Weight</b>	194 lbs.



Offset Head for Reaching Into Corners



Counter-Rotating Brushes / Pad Drivers



Includes Transport Cart



Disassembles for Transport & Storage

# HAWK Wingspan Wide-Area Floor Machine

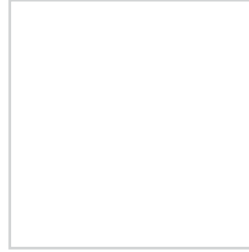
## Rotary Floor Machine Accessories



4 Gallon Solution Tank  
#A001-NAT4 - Natural



6 Gal. Solution Tank  
#SNE-2QR6BLK

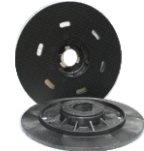


Custom Splash Guard  
#xxxxxxx



(1) 25# Horseshoe Wt.  
#A0032-1P

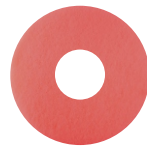
## Rotary Floor Machine Brushes & Pad Drivers



Machine	Tampico Rotary Polish	Poly Rotary Scrub	Soft Nylon Rotary Scrub	80 Grit Rotary Strip	Premium Harpoon Pad Driver
A0035	A0035	A0036	A0037	A0038	A0034



## Rotary Floor Machine Pads



	Black Stripping Pads (5 Pack)	Red Scrubbing Pads (5 Pack)	White Polishing Pads (5 Pack)
15"	A0027-15BK-CS	A0026-15R-CS	A0028-15W-CS