



Scrub and Polish Tight Spaces - 12", 14" and 16"

The HAWK Twin Talon was born out of need for affordable compact power. Dual 1/8 HP motors spin twin heads at 500 RPM in opposing direction. The result is very controllable polisher with a low center of gravity.

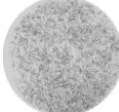
The Twin Talon is small enough to work on counter tops but large enough to polish a small bathroom floor. Available in three sizes. The 36" removable handle (optional) mounts over the hand grips and lets you stand while using the Twin Talon as an edger, carpet spotter and a floor scrubber.

Engineered Design:

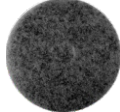
- Compact 22.5 lbs. design.
- 3 sizes (12", 14", & 16")
- The 14" model is designed for use with diamond tools, mounted with pad driver (#AS003-7)
- 1/8 HP Dual Motors.
- Exclusive Mag-Lock™ brush and driver attaching system
- Durable resin cover over steel frame for reliable performance
- Quiet belt drive power
- Simple operator switch for both hand or foot operation
- 2-piece commercial, 35 ft. (16-3) easy-wrap power cord
- Wide selection of drivers & specialty brushes (listed below)
- UL / CUL listed components for safe performance



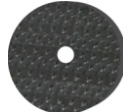
Red Scrub
6" AS009-CS
8" AS009-8CS



White Polish
6" AS011-CS
8" AS011-8CS



Black Strip
6" AS010-CS
8" AS010-8CS



Pad Driver (1)
6" AS003
8" AS003-8



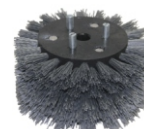
Nylon (1)
6" AS002
8" AS002-8



Grit (1)
6" AS005
8" AS005-8



Nylon Edger (1)
6" AS006
8" AS006-8



Grit Edger(1)
6" AS001
8" AS001-8



Bonnet (6)
6" AS008-6
8" AS008-8

Specifications

Model #	Twin Talon 12	Twin Talon 14	Twin Talon 16
Part #	#F86-12	#F86-14	#F86-16
Pad Size	6"	6"	8"
Brush Size	6"	6"	8"
Motor	1/8HP DC Rectified, 115V, 50/60 Hz		
Brush Speed	Dual Belt Drive, 500 RPM		
Power Cord	35 ft. (16-3) 2-Piece		
Amp Draw	5.0 Amp	5.5 Amp	6.0 Amp
Weight	22.5 lbs.	22.5 lbs.	22.5 lbs.



Hand Polishing of
Hard Surfaces



Carpet Spotting
and Detail