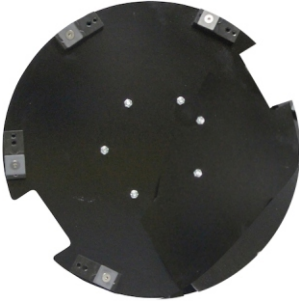
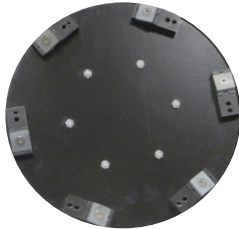


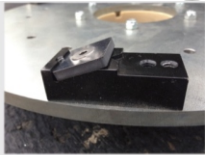
19" Steel Plate
for 20" Floor
Machine



16" Steel Plate
for 17" Floor
Machine



12" Steel Plate
for 13" Floor
Machine



Standard Blade Mount
for Wide Cutting Edge



45° Mount for
Sharp Cutting Point

Scraping, Soil & Coatings Removal

The Hawk Scraper provides exceptional performance when removing tile adhesives, carpet backing, industrial grease & soil, and coatings on hard surfaces. The Hawk Scraper Blade is available in three sizes 13", 17", and 20". Uses six each, 1"x1" tungsten carbide cutters on dual-position rigid mount to scrap and scratch materials being removed.

The Hawk Scraper is built from 3/8" plate steel and e-coated for corrosion resistance and easier clean up. Tungsten carbide tooling is secured in place on rigid mounts with easily removed allen head screws. Each tool has 8 cutting surfaces and designed to be rotated during use. The 1.5" rigid riser is mounted to a custom milled "B" style clutch plate makes it usable on

Drive with a 1.5 HP Hawk Floor Machine with 11:1 Industrial Heavy Duty Gears (Severe Duty Hawk Machines). Higher speed machines are not recommended.

Engineered Design

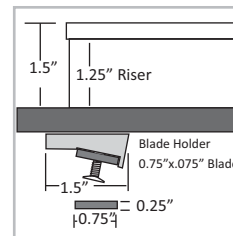
- Available in three sizes from 13", 17", 20"
- 3/8" thick plate construction. E-coated for corrosion resistance
- 6 each, 1" x 1" tungsten carbide cutting blades
- Dual position rigid mounts for scraping and scratching
- Hardened allen head bolts hold tooling in place securely
- 1.5" rigid riser with custom milled aluminum "B" Style Universal Clutch Plate
- Built in hand holes for mounting of 17" & 20" sizes
- Built in hand holes for safer mounting
- Custom milled aluminum clutch won't seize onto gear drive
- 17" and 20" scrapers can hold 6 more cutter assemblies in an inner row.
- Add the optional dust ring and vacuum mounting kits on your Hawk floor machine for handling dusty soils.
- Add optional machine weights on your Hawk floor machine for greater down pressure and faster scraping results.

Safety Features:

- Built in hand holes for safer mounting
- Custom milled aluminum clutch won't seize onto gear drive

Specifications

Model	13" Scraper	17" Scraper	20" Scraper	Replacement Blade Set
Part #	#HP0034	#HP0033	#HP0035	#HPA0033RC
Machine Size	13"	17"	20"	All
Drive Plate Size	12"	16"	19"	-
Drive Plate Speed	165 RPM	165 RPM	165 RPM	-
Weight	xx lbs.	xx lbs.	xx lbs.	xx lbs.
Cutter Blade Size	0.75" x 0.75" x 1/4"			
Clutch Plate	Steel "B" Plate			
Riser	1.25" Tall Plastic			
Floor Machine Requirement	1.5 HP Severe Duty with 11:1 Industrial Gear Set			



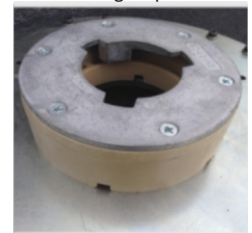
0.75" x 0.75" Blades Mount on the Holder with SS Bolts



17" and 20" Have Built-In Mounting Grip Recess



(3) per Replacement Kits



Scraper Mounts on Hawk Floor Machine with "B" Drive Plug